

## **Application Note 3032 IE Java Settings**

Author **Travis Byrd** | Applications

Contributors **Ismar Uzicanin** | Controls Engineer

## **Introduction**

This Application Note provides a walkthrough for editing Internet Explore and Java Control Panel settings for proper compatibility with the Java Applet used by Mitsubishi Electric Cooling & Heating central controllers to manage indoor units and accessories.

Mitsubishi Electric Cooling & Heating recommends and supports the use of Internet Explorer to access the central controller’s webpage.

This Application Note was created based on Windows Internet Explorer 11 and Java Version 8 Update 71. It is important that the Java software is up to date. Please use Java Version 8 Update 31 or later.

## **Table of Contents**

Compatibility Mode .....	3
Internet Explorer Security Settings .....	3
Java Control Panel Security Settings .....	5
Example Browser Pages .....	8

## **Compatibility Mode**

Enable Compatibility Mode by clicking the icon on the right side of the Address Bar.

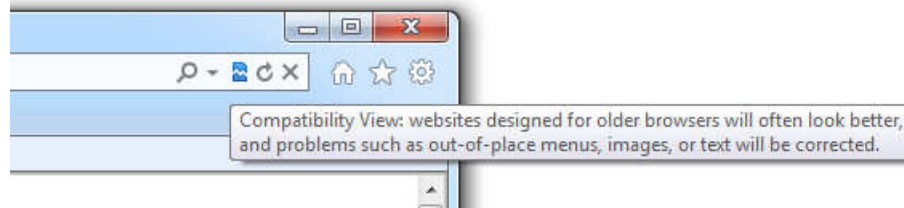


Figure 1: Compatibility View

## **Internet Explorer Security Settings**

The URL of the central controller needs to be added to the Trusted Sites list. First, click on the gear icon on the top right of the Internet Explorer window and select Internet options as shown in Figure 2.

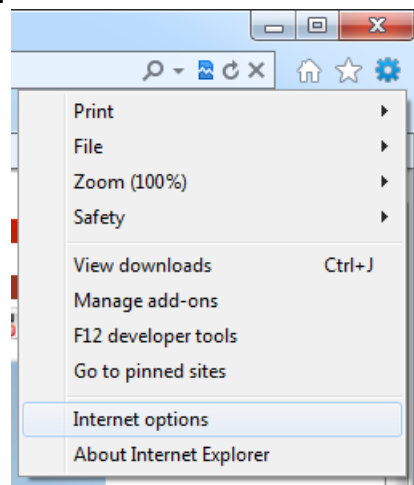


Figure 2: IE Settings

A window will pop up with your Internet Options as shown in Figure 3.

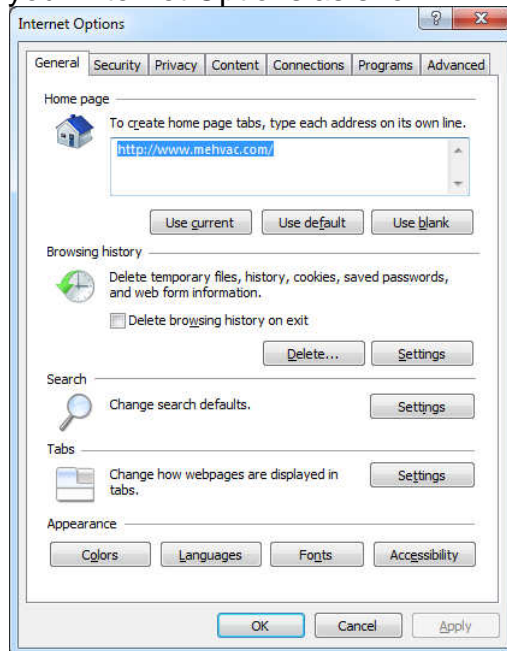


Figure 3: Internet Options

Click on the Security tab and then select Trusted Sites. Reduce your Security level for Trusted Sites to **Low** as shown in the Figure 4. Then click on the Sites buttons.

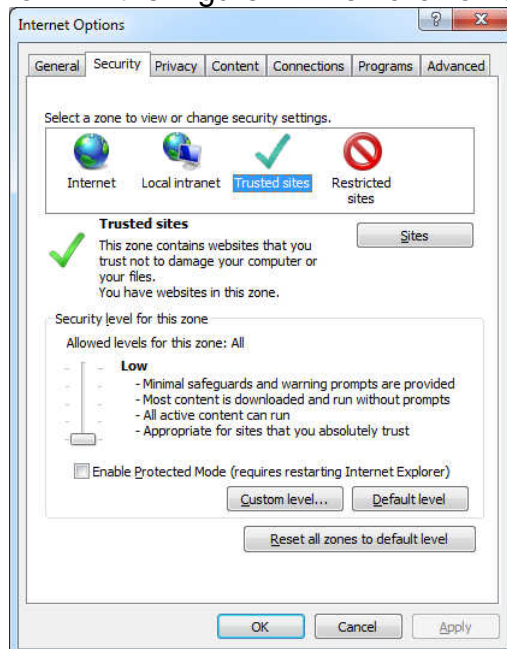


Figure 4: Security Tab

The Trusted Sites window will pop up shown in Figure 5. Uncheck the check box for Require server verification (https:) for all sites in the zone. Enter the URL of your central controllers' one at a time into the Add this website to the zone field then click the Add button. Once you have finished adding all the URLs of the central controllers, click the Close button. Then click the OK button of the Internet Options window.

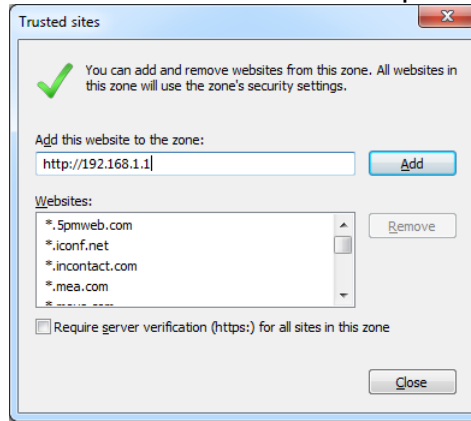


Figure 5: Trusted Sites

## Java Control Panel Security Settings

Open your control panel by clicking the Start button then clicking Control Panel.

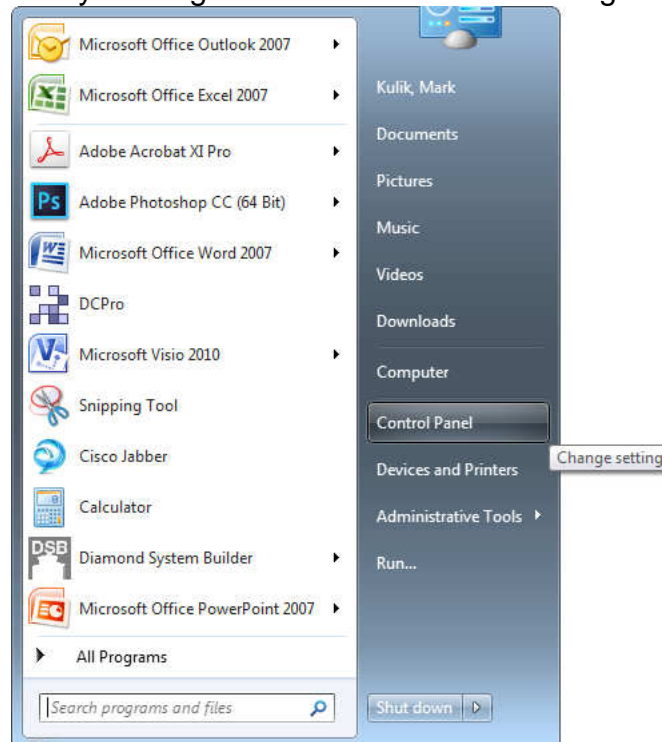


Figure 6: Start

While inside of the Control Panel, click on the Java Control Panel link.

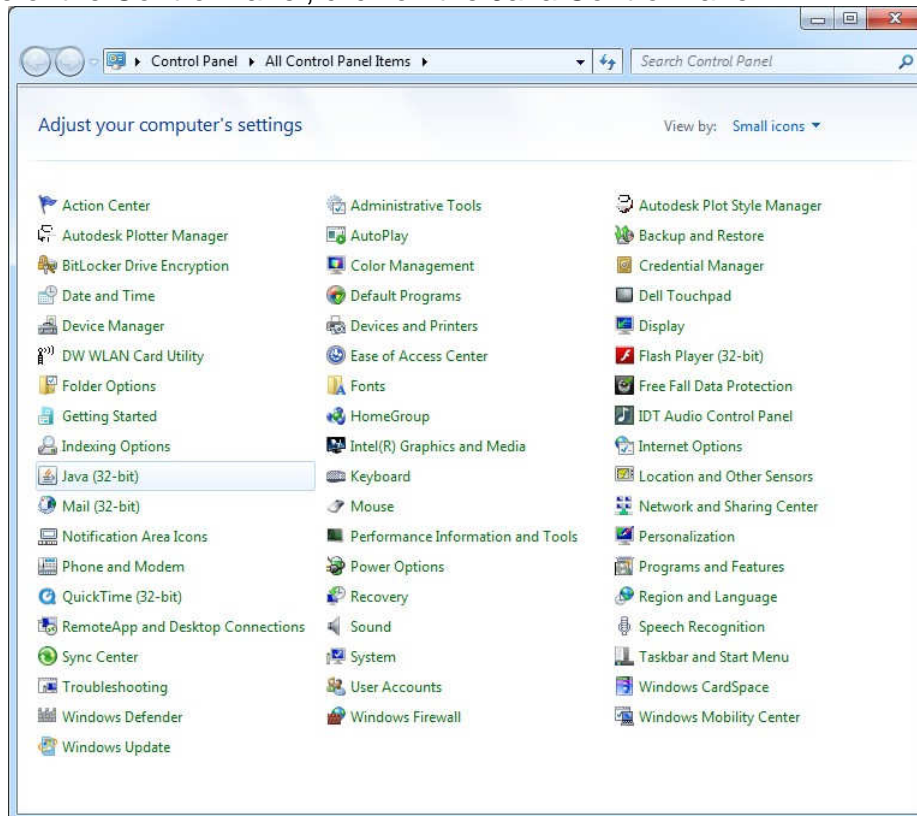


Figure 7: Control Panel

Once the Java Control panel opens, select the Security tab. Change the security level to High. Then click on the Edit Site List... button.

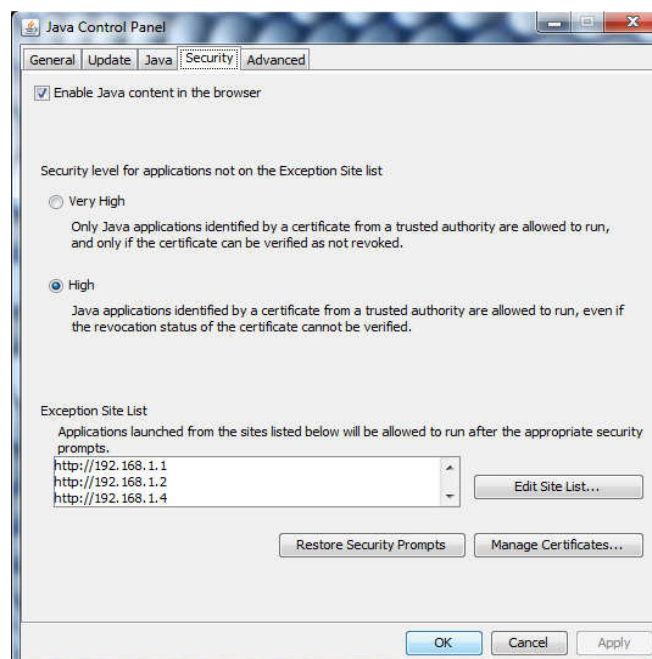


Figure 8: Java Control Panel

Click on the Add button and then enter the URL of the central controller. Once you have entered the first URL, click on the Add button again to continue to add more central controller URLs. Add both the unsecured (http://) and secured (https://) URLs into the Exception Site List.

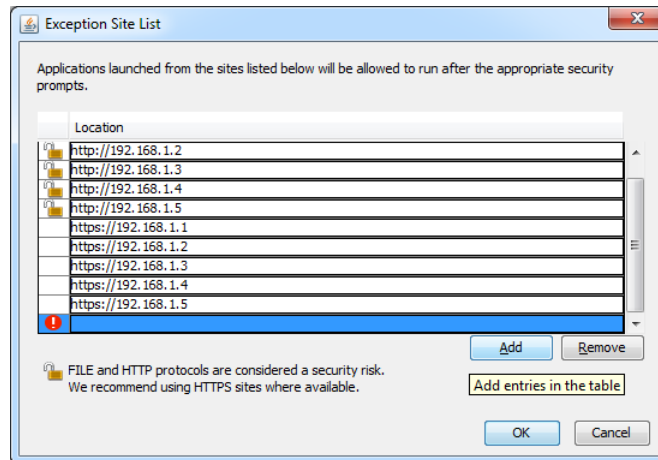


Figure 9: Exception Site List

Once all of the URLs have been entered into the Exception Site List, click on the OK button and OK button for the Java Control Panel.

You have successfully adjusted the security settings of Java. This allows for proper operation of the Java Applet used by the central controllers to manage indoor units and accessories.

## Example Browser Pages

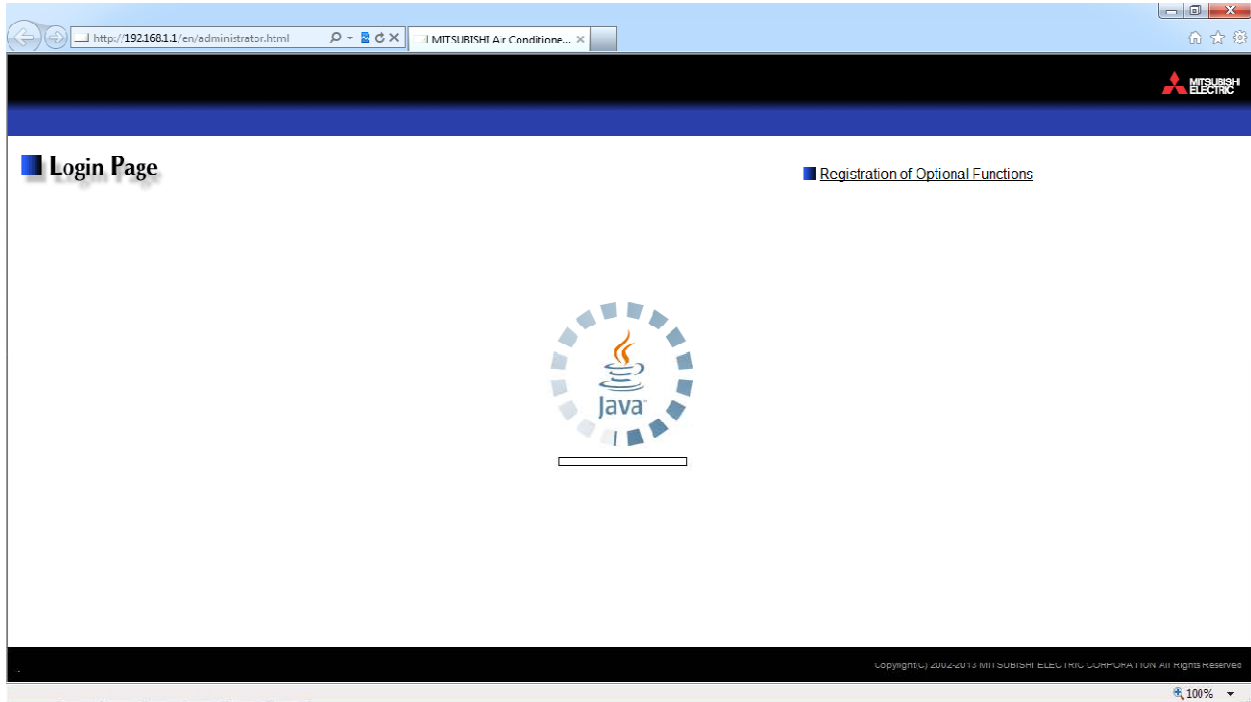


Figure 10: Login Page Starting

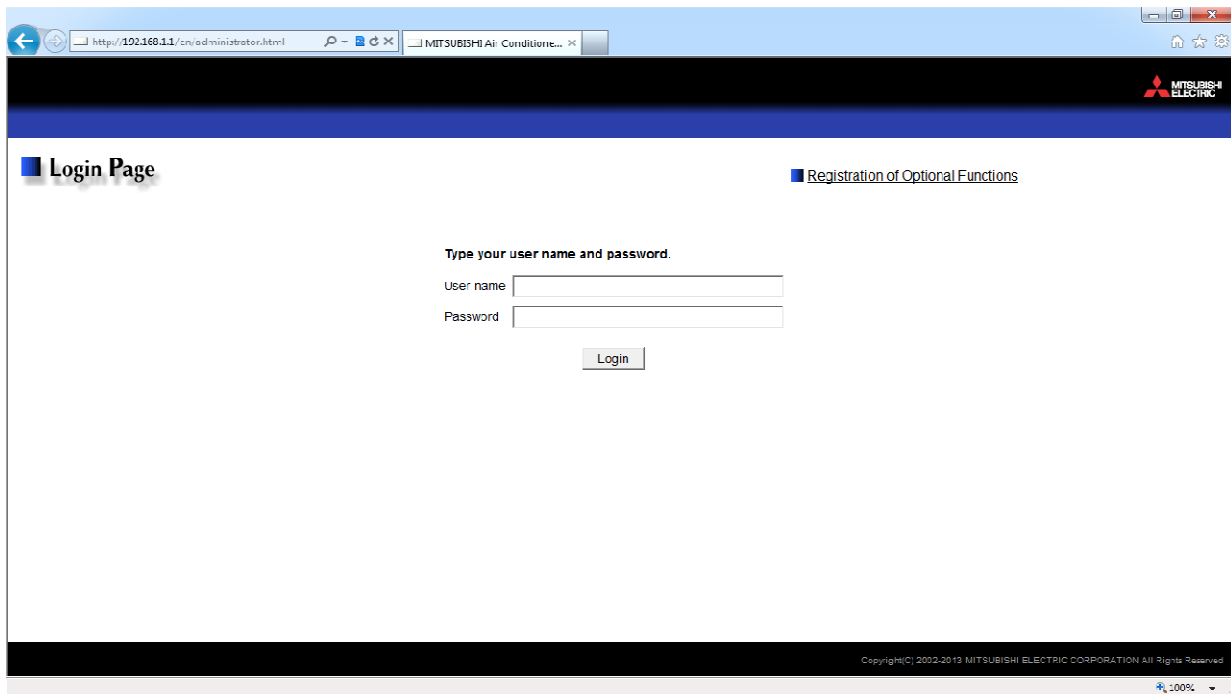


Figure 11: Login Page



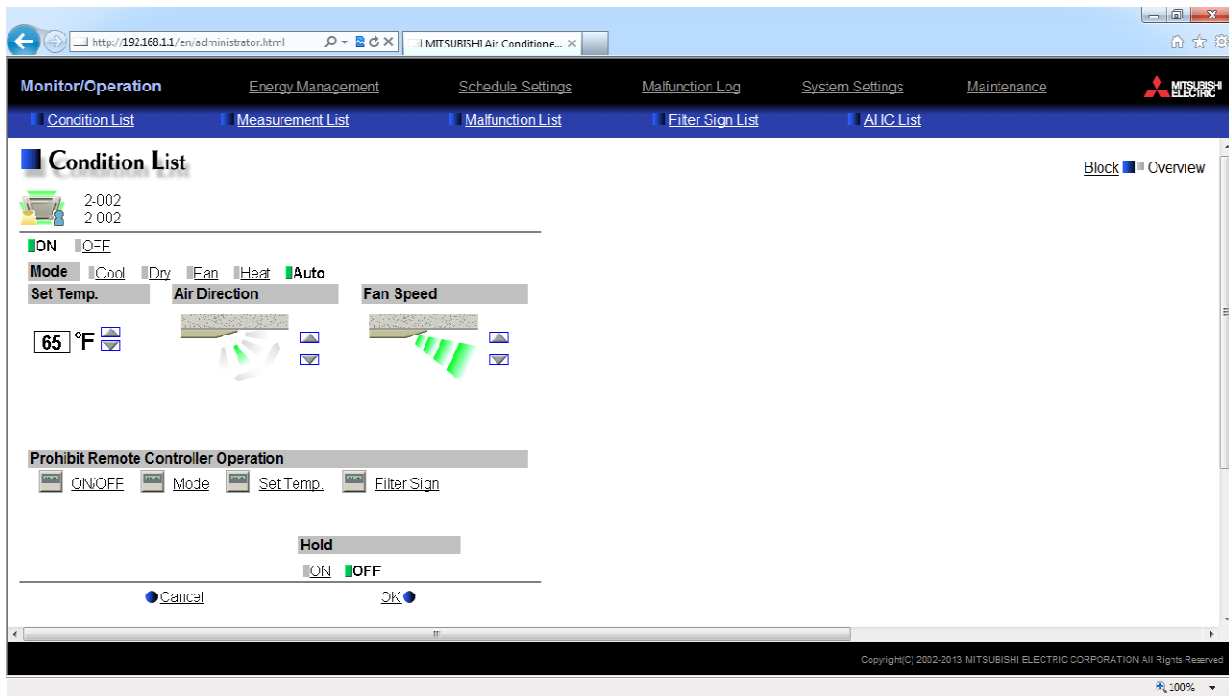


Figure 12: Indoor unit

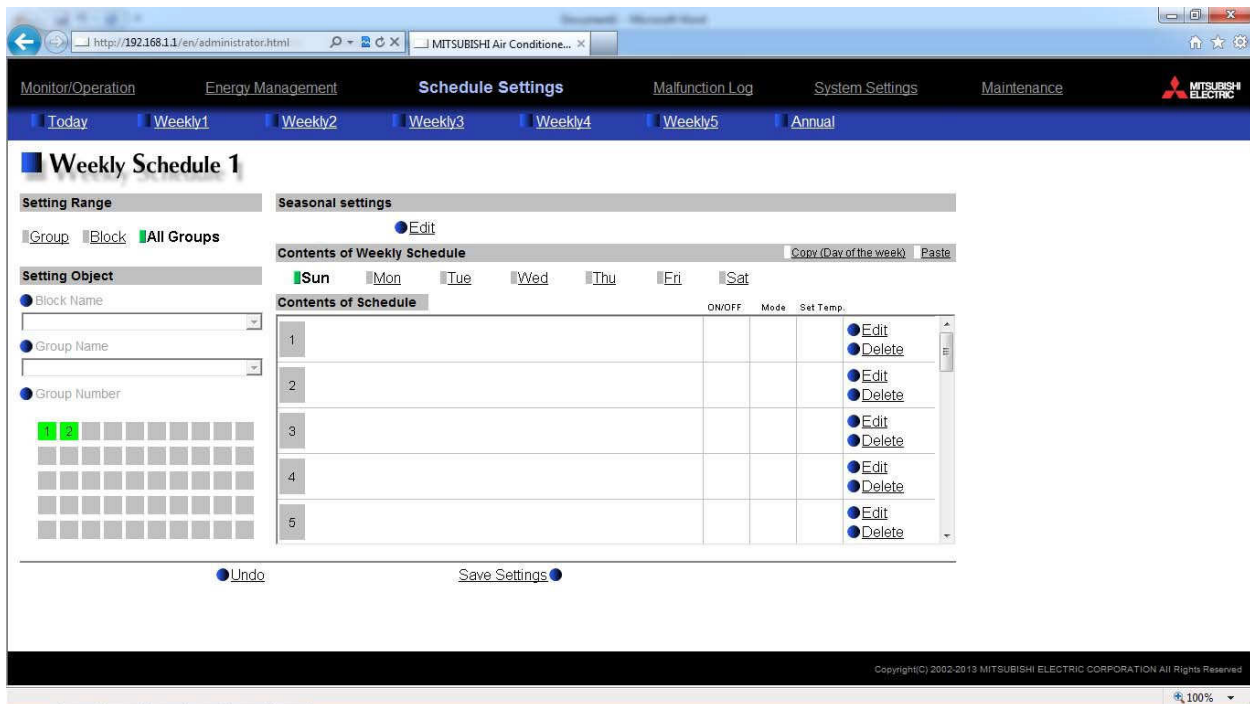


Figure 13: Weekly Schedule

*Intentionally Left Blank*