

APPLICATION NOTES

Application Note 3015: Zone Control Connection

Author **Mark Kulik** | Controls Engineer

Introduction

The Zone Control app allows a user to operate and monitor their Mitsubishi Electric Cooling & Heating indoor units. Zone Control app is available for an iPhone, iPad or iPod Touch that is iOS 7 compatible.

The Zone Control app can manage the indoor units by communicating with a CITY MULTI central controller. The compatible CITY MULTI central controllers are as follows EB-50, AE-200, AE-50, AG-150, or GB-50ADA.

There is more than one way to connect to the Zone Control app to a CITY MULTI central controller. The most common ways are as follows:

- Option 1 is to access it through a local wireless network.
- Option 2 is to access it through a large wireless network with access points.
- Option 3 is to access it remotely through a VPN service.

Table of Contents

Option 1.....	3
Option 2.....	4
Option 3.....	5

Option 1

The first option to manage indoor units with the Zone Control app is through a local wireless router as shown in Figure 01. The CITY MULTI central controller is connected to a router via Ethernet cable. The router allows the iOS 7 compatible device to connect to the router's local network via Wi-Fi. Then Zone Control can communicate with the central controller allowing you to manage the indoor units.



Figure 1: Option 1

Option 2

The second option to manage indoor units with the Zone Control app through wireless access points throughout a building or campus connected to the network and central controller as shown in Figure 02. The wireless access points allow an iOS 7 compatible device to connect the network via Wi-Fi. Then Zone Control can communicate with the central controller allowing you to manage the indoor units.



Figure 2: Option 2

Option 3

The third option to manage the indoor units with the Zone Control app is to remotely connect to a network by a VPN (Virtual Private Network) service. VPN allows the iOS 7 compatible device to connect to the network the central controller is connected to as shown in Figure 03. The VPN service allows an iOS 7 compatible device to connect the network via Wi-Fi or cellular data internet connection. This enables remote connectivity of Zone Control from any location with an internet connection. Then Zone Control can communicate with the central controller allowing it to manage the indoor units.

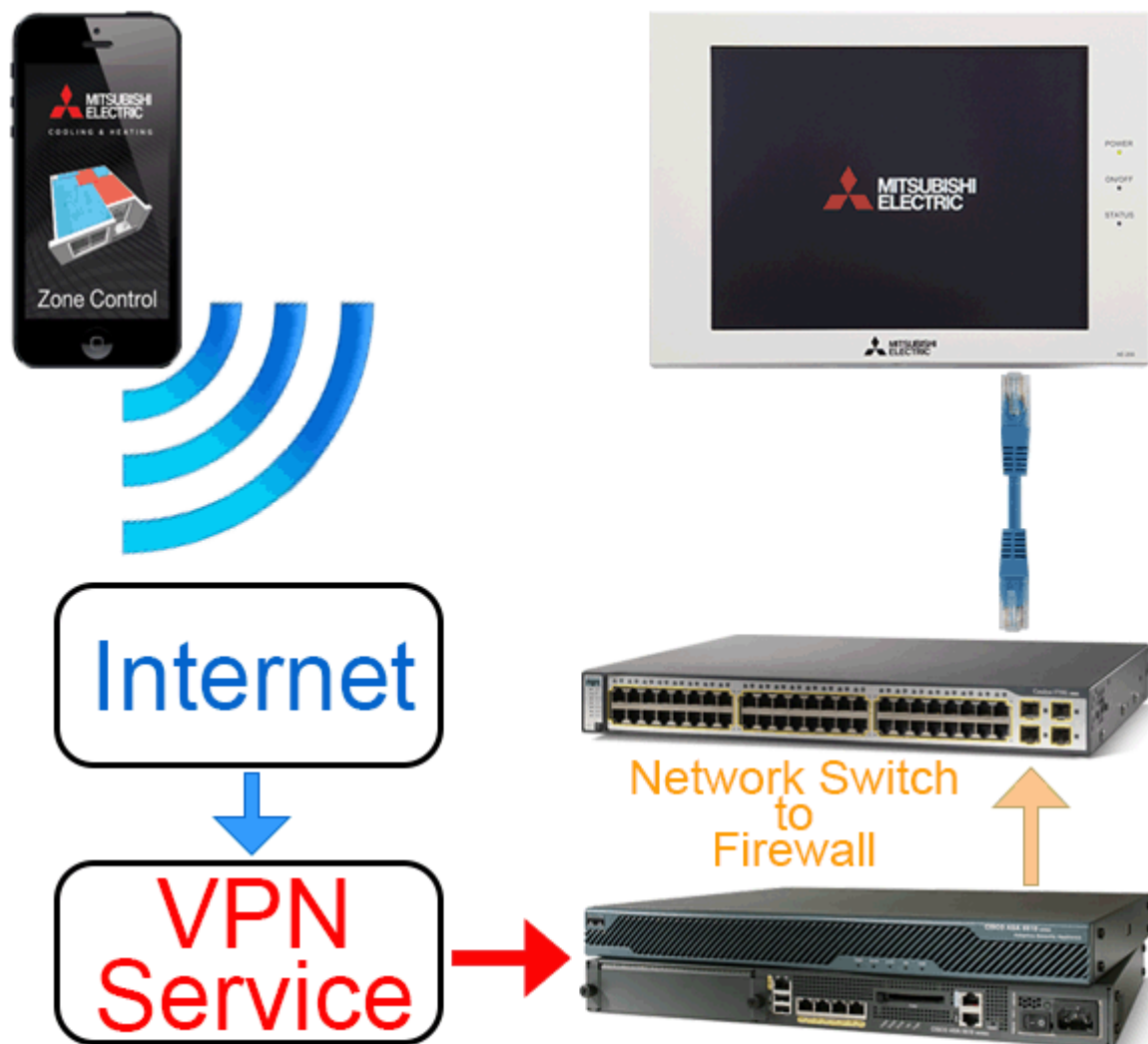


Figure 3: Option 3

Page Intentionally Left Blank